

ControlArt AB

by LABINDUS SERVICES



TC 210, TC 220 and TC 110

The test equipments are developed in order to satisfy the needs to test samples with cyclic atmospheric corrosion test methods with excellent control accuracy.

The high control accuracy in the test equipment enables a test environment that can handle the most demanding test standards.



TC 110 has an inner volume of 1500 liters and a test plane with an area of 1 m² (1 m × 1 m).

TC 110 and TC 210 are equipped with a cooling unit and have a working range from 0°C to 65°C.

TC 200 series have a fully automated mixing and salt application system both for ACT rain as well as fog.

TC 220 are equipped with a freezer unit and has a working range from -17°C to 65°C. TC 220 has also an additional system for salt fog.



TC 210 and TC 220 have an inner volume of 2000 liters and the test plane has an area of 2 m² (1 m × 2 m).

The equipment is user friendly designed with respect to:

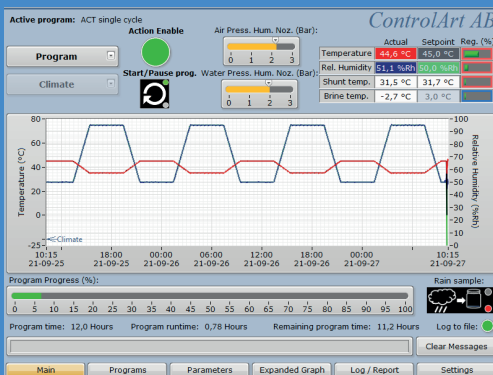
- Ergonomic design for loading and unloading test samples to the test compartment, especially if the sample holders that has been designed for the equipment is being used.
- The door is not hindering the accessibility within or outside the cabinet.
- Ergonomic placement of adjuster components and touch screen.
- The “Rain solution” and “Fog solution” are automatically mixed by the equipment.
- The operation and maintenance needs are very low.
- The test space in the cabinet is homogeneous for all prescribed environmental parameters, like temperature and relative humidity.
- The cabinet temperature and relative humidity together with drying conditions are uniquely even over the whole test surface.
- Fully automated running gives easy management.
- The equipment monitors incoming media, such as electricity, compressed air and DI-water pressure. If the incoming media deviates, the equipment will issue an warning or error. If the option Alarm monitor is installed, the equipment will send SMS or E-mail or both with the occurred incident at the same time as the incident is displayed on the screen.

The equipment has a 12-inch touch screen where configurations, choice of test cycle and display of actual running data is shown. It is also possible to display historical data.

Apart from the test cycles that are already preprogrammed in the equipment, it is possible to change or transfer new programs to the equipment via the built in ethernet connection or via an USB memory. The test programs are written in a software that is included with the

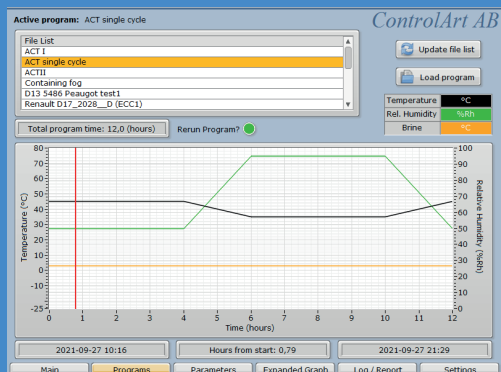
The equipment stores all running data internally, this means that a separate logging computer is not needed.

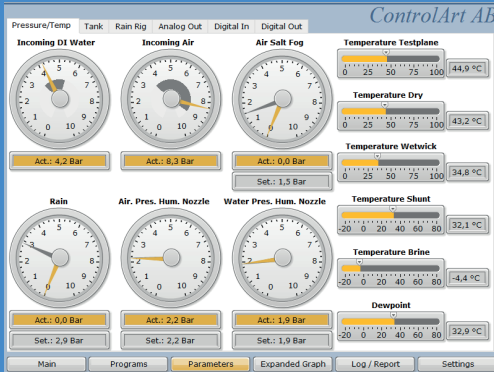
The user can export historical data from a choosen time period on the test equipment.



The "Main" screen of the Equipment.

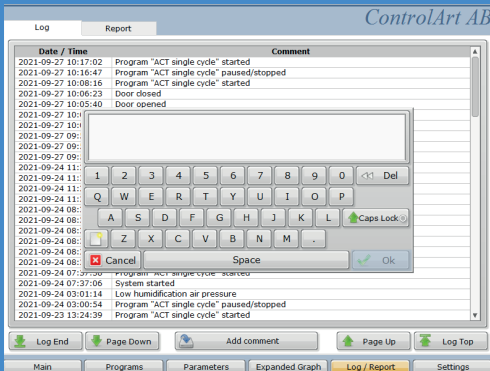
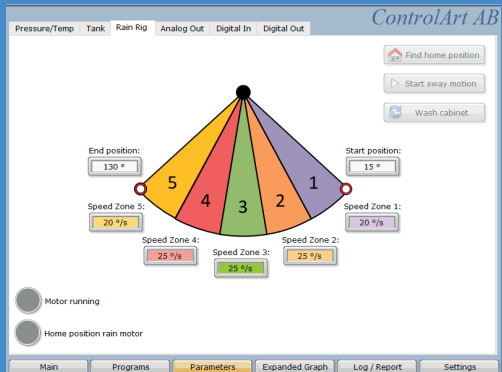
Available test programs are listed together with details of how the actual chosen test program is programmed with duration time information. This time can be changed by the operator here so that a start somewhere in the test cycle is possible. A graphical presentation of the programmed test curve is also shown.





The "Parameters" for the menu – "Pressure and temperatures" is shown.

The menu "Parameters" – "Rain Rig" enables extended possibilities to control the rain application. The user can control speeds in different sectors and control both start and stop angle for the rain application.



The Menu – "Log/Report" – "Log" is showing an actual event log for the equipment as well as actual warning- and error-messages that has been reported. – "Report" a possibility to create a report file for historical data is given.

The included logger program software on a computer with an ethernet connection to the test equipment can give actual running data as well as stored data as an exported file in either text format or as an Excel file.

HC 100

The Test equipment is first and foremost developed to satisfy the need to test humidity exposures at saturation level with high condense water formation on the test objects.

The actual test volume is 1500 mm width, 440 mm in depth and 1450 mm in height.

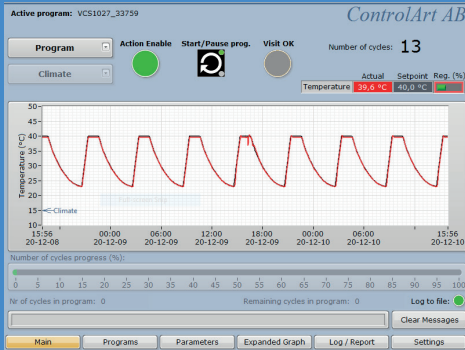
HC 100 are developed to offer flexibility and accurate control of climate parameters together with a robust and long-term stability. A user-friendly ergonomic design gives the equipment an added value. Due to performance and flexibility the HC 100

has unique possibilities to meet new demands in testing. It can handle accurate control of climate parameters.



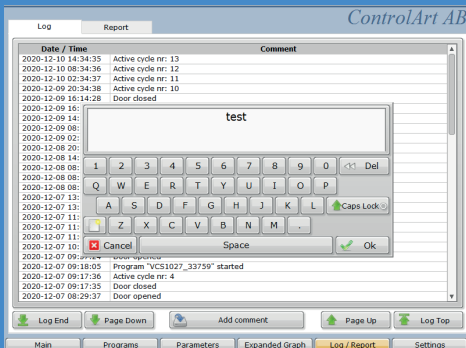
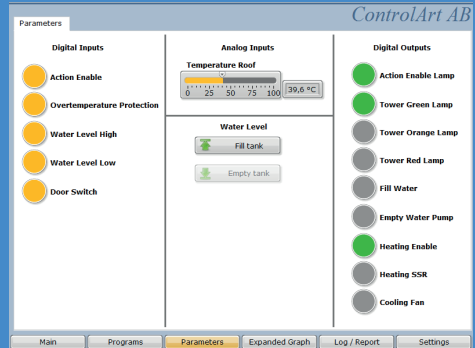
HC 100 are very user friendly and ergonomic due to:

- Handling of test object are made at a height suited for working standing.
- Ergonomic placement of adjuster components and touch screen.
- The design of the door gives a good possibility to handle test objects outside the cabinet as well.
- The controller can, if programmed accordingly, change the water at certain time intervals in order to avoid algae growth and salt accumulation.



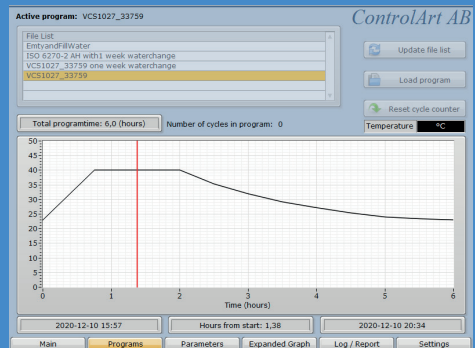
"Main" screen is shown.

The menu "Parameter" is shown.



The Menu – "Log/Report"
 - "Log" is showing an actual event log for the equipment as well as actual warning- and error-messages as has been reported.
 – "Report" gives a possibility to create a report file for historical data.

Available test programs are listed together with details of how the actual chosen test program is programmed with duration time information. This time can be changed by the operator here so that a start somewhere in the test cycle is possible. A graphical presentation of the programmed test curve is also given here.





Optional accessories are available as sample holders which are made in such a way that the given demands in test standards are fulfilled if they are used. The sample holders are designed in a manner that a minimum of salt solution is aggregated. If sample holders designed by ControlArt are used in the whole test plane of the TC 200 series equipments, 360 standard test panels (100 mm x 200 mm) can be inserted for testing. The sample holders can be ordered separately from ControlArt.

ControlArt AB
Tärnvägen 13 B
475 40 Hönö
Sweden

info@controlart.se
www.controlart.se

Your local contact:

LABINDUS SERVICES srl - Rue de la Lisière 20 - B4102 OUGREE - Belgium

Phone: +32 (0)4 361 20 46 - Mobile: +32 (0)471 368 723 - E-mail: services@labindus.be - www.labinduservices.com